

A241

Piezoresistive diffusion silicon of metal diaphragm

FEATURES

- Superior Long term Stability
- Provides a high level output
- Linear Amplified Output
- Excellent Repeatability & Hysteresis
- Temperature Compensated
- EMI/RFI Protection
- Customizable

The A2410DM(CM) series uses a stainless steel diaphragm filled with silicone oil and a piezoresistive diffusion silicon type as the sensing element, providing excellent resistance to most liquids and chemicals when mounted.

Ruggedness and reliability are also enhanced by a stainless steel housing to resist corrosion pressure sealing for media compatibility is provided by selection of Non-welding Sealing type. Metal sensing element contains and integral, reliable, solid state, custom ASIC.



APPLICATIONS

- ✓ Pneumatic and Hydraulic controls
- ✓ Pump and Compressors
- ✓ Refrigeration units
- ✓ Agricultural technology
- ✓ Energy and Water Management
- ✓ Environmental control systems

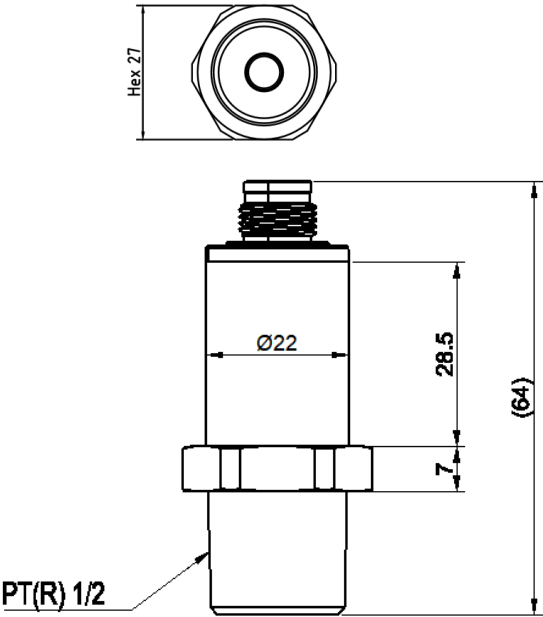
PERFORMANCE SPECIFICATIONS		
PARAMETERS	Current (2-Wire)	Voltage (3-Wire)
Output	4~20mA	0~5V, 0.5~4.5V, 1~5V, 0~10V
Power Supply	8~30VDC [Option]	
Electric Connection	M12, DIN43650C, Etc. [Option]	
Pressure Range	±500mmH2O, 1000mmH2O, ±250mb, ±500mb, Etc. [Option]	
Operating Temp. Range	-40 to 125°C	
Compensated Temp. Range	-20 to 80°C	
Accuracy	≤±0.5%F.S [Typical/25°C]	
Total Error band	≤±1.5%F.S [Typical]	
Hysteresis and repeatability	≤±0.1%F.S [Typical] / ≤±0.15%F.S [MAX]	
Pressure Port	R(PT)1/4, R(PT)1/2, Etc. [Option]	
Wetted Port material	STS316	
Body / Pressure Port material	STS316	
Electric connection material	PA66+GF30 gold plated Pin	
Enclosure	IP65(DIN43650), IP67	
Over Pressure / Burst Pressure	2xF.S. / 5xF.S.	
Response time 10~90%	≤2ms	
Withstand voltage	500V AC (1minutes between case and all terminals tied)	
Insulation resistance	Greater than 100MΩ (20V DC between case and all terminals tied)	
Mechanical life cycle	1,000,000/cycle	
Circuit protection	Reverse polarity protected. (Power supply +/-)	
Shock proof	1000m/s² (6ms or less,X,Y,Z 3times for each at constant temp.)	
Vibration proof	200m/s² (10~1000Hz, Y:4h, Z:2h at constant temp.)	
Pressure medium	Non-corrosive medium(Air, Water, Oil, Gas)	
Weight	100g (M12 Connector)	



**DIMENSIONS**

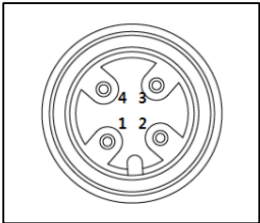
**Dimensions(mm)**

**M12\*1.0P (CM types)**



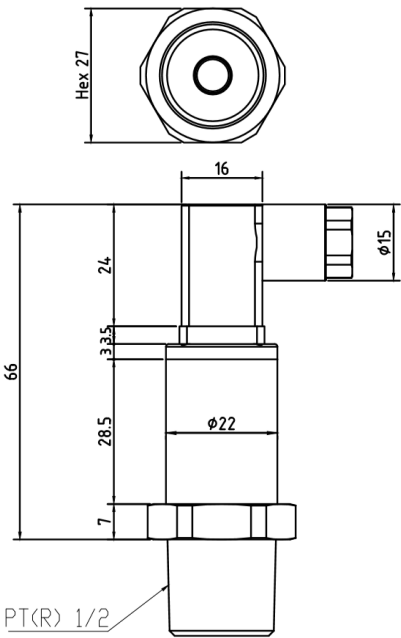
CM. Low pressure  
(-1 ~ 0.1...1bar)  
Oil-filled type

**ELECTRONICAL CONNECTIONS**



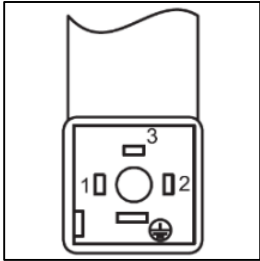
Ouput signal	Current	Voltage
1	Power(+)	Power(+)
2	NC	Output
3	Power(-)	GND
4	NC	NC

**DIN43650C (DM types)**



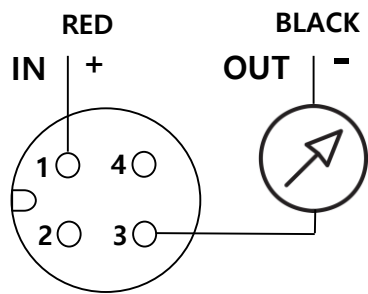
DM. Low pressure  
(-1 ~ 0.1...1bar)  
Oil-filled type

**ELECTRONICAL CONNECTIONS**



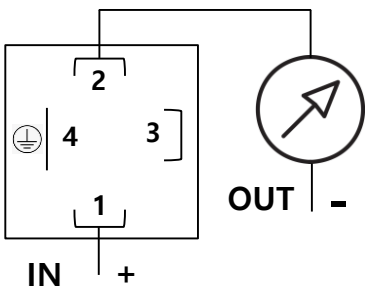
Ouput signal	Current	Voltage
1	Power(+)	Power(+)
2	Power(-)	GND
3	NC	Output
PE		

## Current Output(2-Wire)



1(IN) 3(OUT)

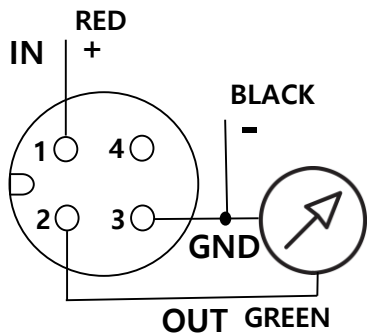
M12\*1.0P



1(IN) 2(OUT)

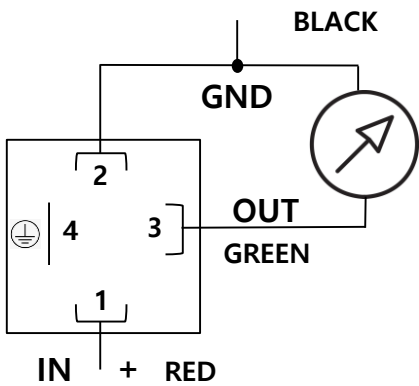
DIN43650C

## Voltage Output(3-Wire)



1(IN) 2(OUT) 3(GND)

M12\*1.0P



1(IN) 3(OUT) 2(GND)

DIN43650C

Ordering Information

**A2410D-133G**

①②    ③④⑤⑥

1. Power Supply	
0	8~30VDC
1	5VDC

2. Connection	
A	Deutsch DT04-3P
B	Packard Metri-Pack
C	M12*1.0P (C, CM)
D	DIN43650C (D, DM, DA)
E	Fixed Cable
F	Deutsch DT04-4P
G	HW090 6181-0072
H	Superseal series 1.5
I	Other

3. Output	
1	4~20mA
2	0~5V
3	0.5~4.5V
4	1~5V
5	0~10V

4. Pressure Port	
1	G(PF)1/4
2	G(PF)1/2
3	R(PT)1/4
4	R(PT)1/2
5	9/16-18 UNF(M)
6	7/16-20 UNF(Fe)
7	7/16-20 UNF(M)
8	Other

5. Pressure Range	
V	± 250mb
W	± 500mb
X	± 250mmH2O
Y	± 500mmH2O
Z	0~1000mmH2O
1	-1~15bar
2	-1~35bar
3	0~10bar
4	0~16bar
5	0~20bar
6	0~25bar
7	0~30bar
8	0~35bar
9	0~50bar
A	0~100bar
B	0~200bar
C	0~250bar
D	0~500bar
E	Other

6. Pressure Type	
G	Gage
A	Absolute

## Cable accessories

Type	Description
Cable with ROUND Packard Metri-Pack mating connector	1m with outer sheath
Cable with ROUND Packard Metri-Pack mating connector	2m with outer sheath
Cable with ROUND Packard Metri-Pack mating connector	3m with outer sheath
Cable with M12*1-4P mating connector	1m with outer sheath
Cable with M12*1-4P mating connector	2m with outer sheath
Cable with M12*1-4P mating connector	3m with outer sheath
Cable with Deutsch(DT04-3P) mating connector	1m
Cable with Deutsch(DT04-3P) mating connector	2m
Cable with Deutsch(DT04-3P) mating connector	3m
Fixed Cable	1m with outer sheath
Fixed Cable	2m with outer sheath
Fixed Cable	3m with outer sheath