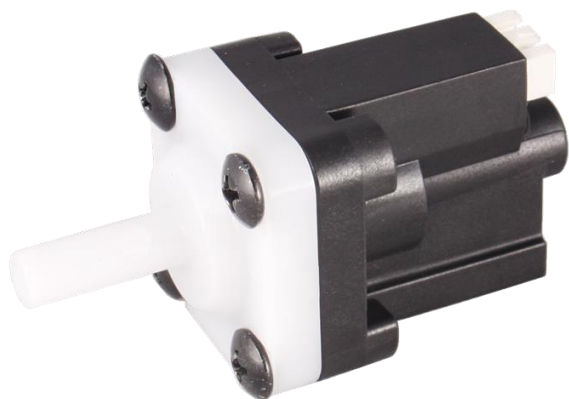


Water Pressure Sensor (Linear signal)

(AWPSS-04P)

PRODUCT SPECIFICATION SHEET



FEATURES

- Linearity out put(V)
- No-contact
- Excellent durability
- Reasonable price, etc..

CONTENTS

Features	1
Application	1
Specifications	1~2
Dimensions	3

APPLICATION

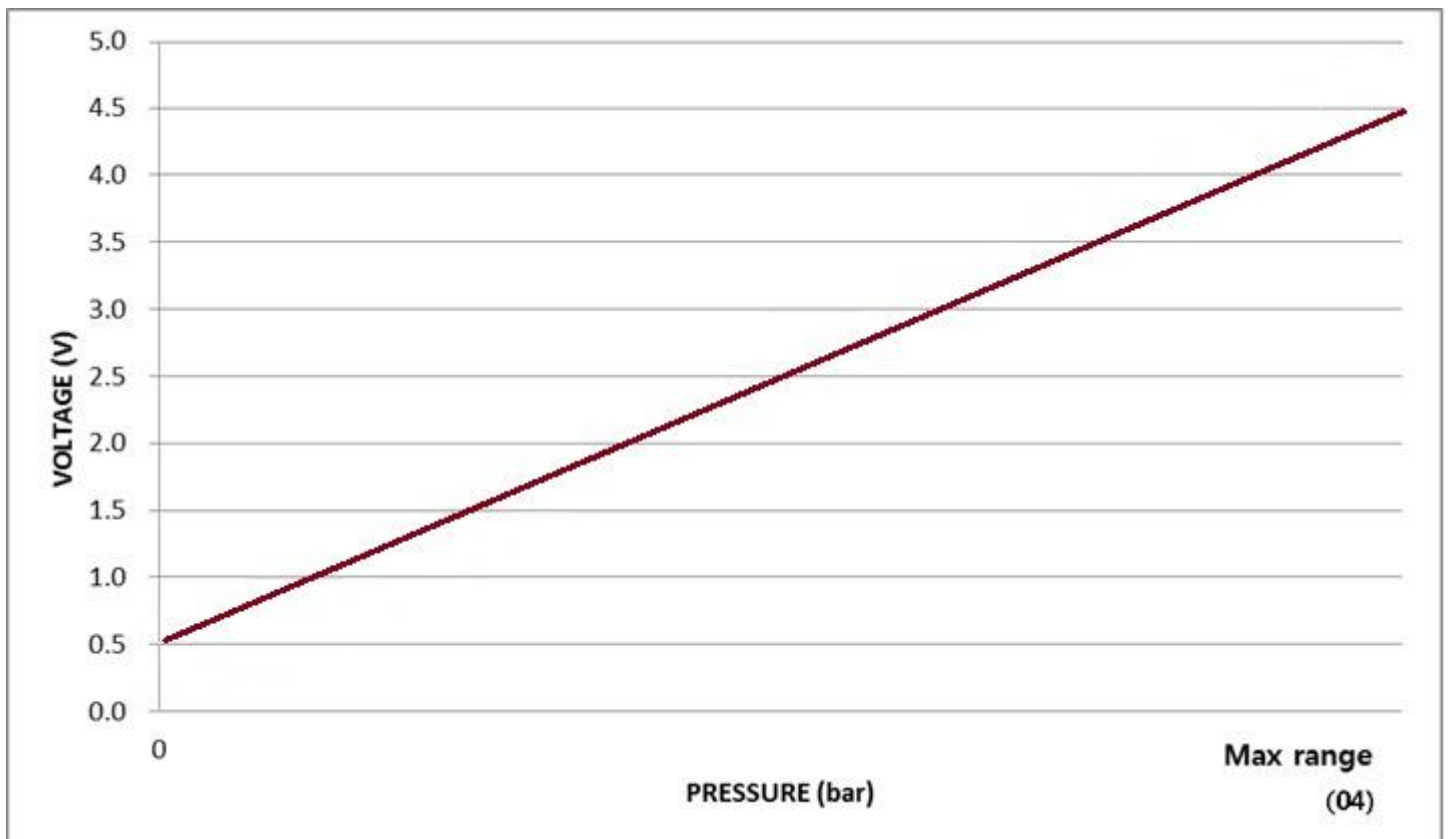
This sensor is usually used in water purifier , coffee machine , etc.

SPECIFICATION

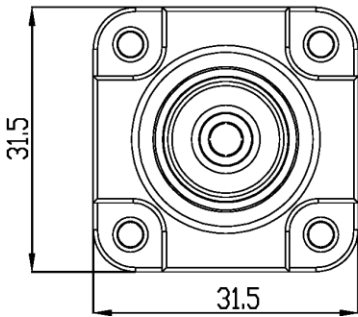
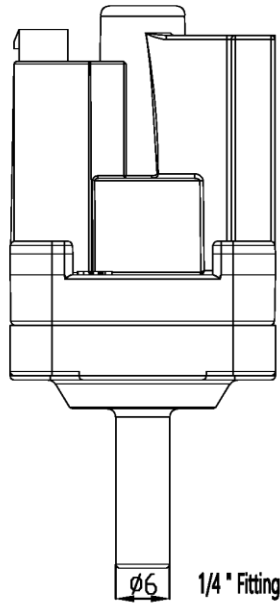
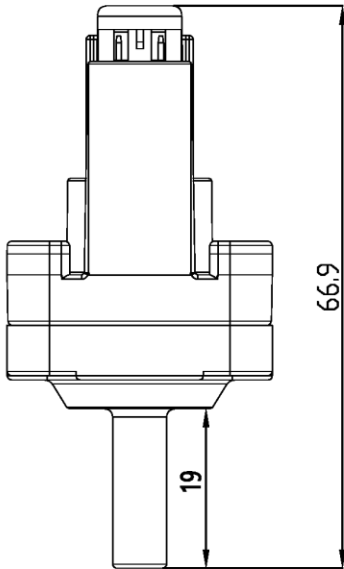
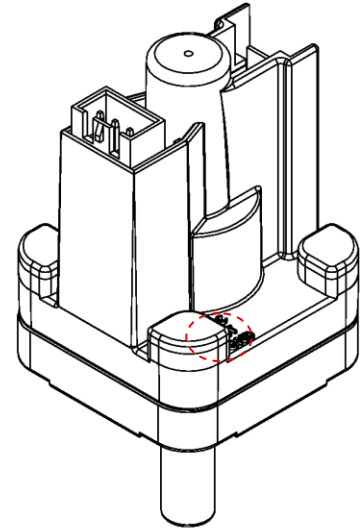
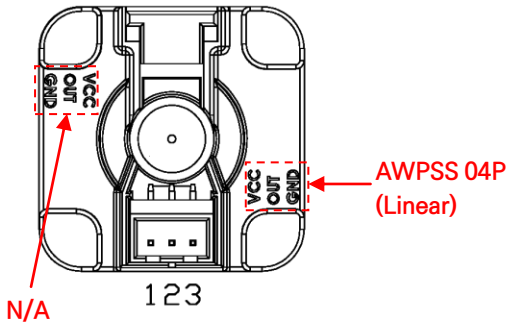
Medium	air or water
Pressure range	0 ~ 1bar , 0 ~ 4 bar , 0 ~ 10bar (It can be changed by customer's request)
Rupture pressure	20 bar
Materials in contact with medium	- Cover : POM (※Optional : FDA certified materials.) - Body : PA66(GF 30%) - Sensor : Hall IC
Rubber	- EPDM : Air, Water
Temperature	- Medium and ambient : 0 °C ~ 85 °C (It shall not be frozen) - Storage : -30 °C ~ 80 °C -Rupture : 95 °C
Power supply	- DC 5V
Output	- DC 0.5 ~ 4.5V (standard) / DC 0 ~ 5V (It can be changed by customer' request)
Current consumption	less than 15mA

Pressure connection	1/4" fitting (Refer to Dimension)
Electrical connection	YEONHO, SMH250-03
Installation Direction	Free
Protection standard	IP 00
Accuracy	± 3.0(% F.S) (Included hysteresis value)
Life Cycle	high pressure/ minimum pressure: 5 sec – 100,000 Cycle

OUTPUT



DIMENSION



Mates With Part
(HOUSING : SMH-250-03 , YEONHO
TERMINAL : YST025 YEONHO)

Pin NO.3 VCC
Pin NO.2 OUT
Pin NO.1 GND

The specifications and dimensions can be changed without warning.