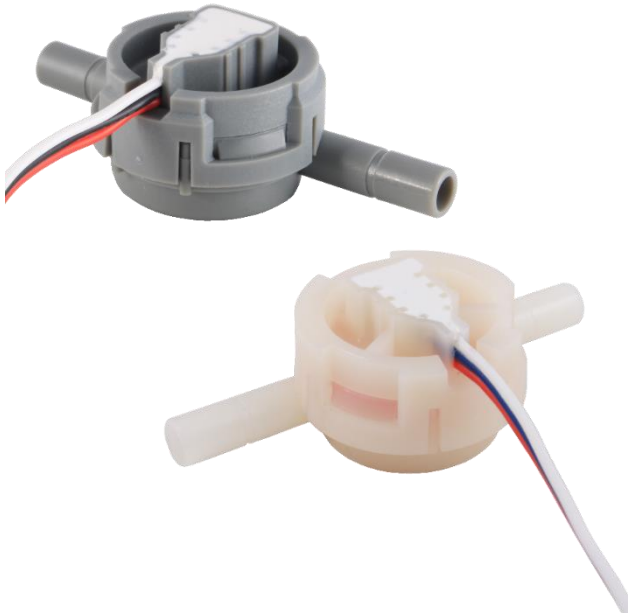


멀티스팩 유량센서 (AMWF-0315 MS)

PRODUCT SPECIFICATION SHEET



특징

- 저압에서 우수한 특성을 가지고 있습니다.
- 유량에 따른 선형적인 주파수
- 두 가지 사양으로 사용할 수 있습니다.

목차

애플리케이션	1
특징	1
규격	1~3
치수	4

애플리케이션

물 흐름 감지
이온수기, 정수기, 제빙기, 커피머신, 냉장고 가전제품

타입	: Hall sensor	
설치방향	: 수 평 설 치 (표준), (optional : 수직설치)	
주변 온도	: 0 ~ 50℃	
허용유체온도	: 0 ~ 50℃(얼지 않을 것)	
재료	Body	POK GF30%
	Rotor	POK
	Magnet	Ba-Ferrite
	Molding	Epoxy

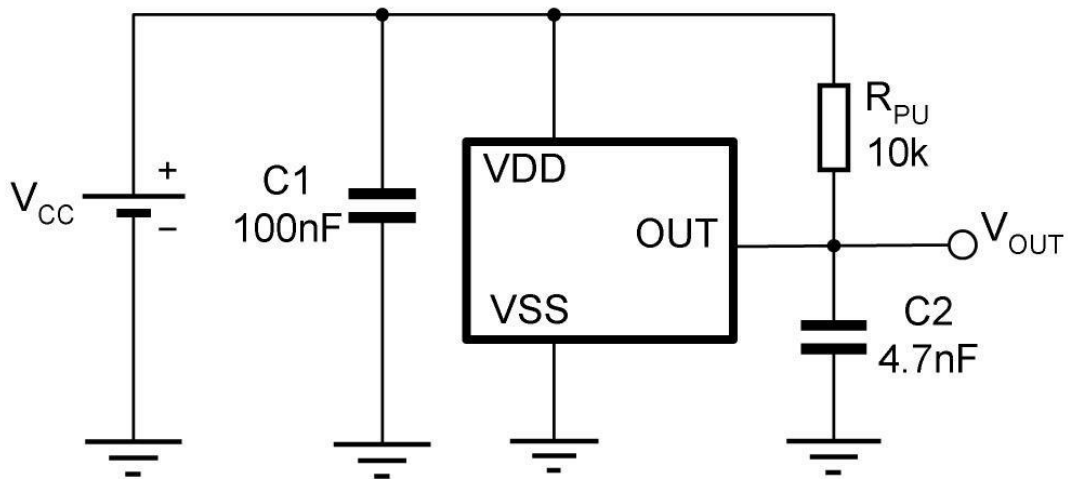
규격

유체	물											
작동 범위	0.3 ~ 1.5ℓ / min											
리터당 펄스	AMWF-0315MS-K (COLOR : GRAY)		AMWF-0315MS-C (COLOR : NATURAL)									
	0.5ℓ / min	1.0ℓ / min	0.5ℓ / min	1.0ℓ / min								
	8.8±15% Hz	18.3±10% Hz	16.5±15% Hz	33.0±10% Hz								
	<table border="1" style="margin-top: 10px;"> <thead> <tr> <th></th> <th>0.5ℓ</th> <th>1.0ℓ</th> </tr> </thead> <tbody> <tr> <td>MS-K</td> <td>8.8</td> <td>18.3</td> </tr> <tr> <td>MS-C</td> <td>16.4</td> <td>33.6</td> </tr> </tbody> </table>					0.5ℓ	1.0ℓ	MS-K	8.8	18.3	MS-C	16.4
	0.5ℓ	1.0ℓ										
MS-K	8.8	18.3										
MS-C	16.4	33.6										
사용압력	10 kg/cm ² (내압: 17.5kgf/cm ² - 1분간)											
전기사양	DC 2.7V ~ 24V, 4.5mA											
Duty cycle	30 ~ 70%											
내전압	커넥터와 바디 사이에 AC 600V(50/60Hz)의 전압을 가했을때 3mA 이하일 것.											
Pipe Connection (Fittings)	원터치 피팅 (6.5mm or 1/4 fast connector)											
설치	표준		옵션									
	<p style="text-align: center;">수평</p>		<p style="text-align: center;">수직</p>									
무게	30g											

APPLICATION CIRCUIT

This product includes semiconductor IC.
So this have to be protected from noises of outside circuit. Please refer to a circuit as below.
(This circuit for protecting from noise was supported by the supplier of semiconductor)

Typical Three-Wire Application Circuit



Automotive and Harsh, Noisy Environments Three-Wire Circuit

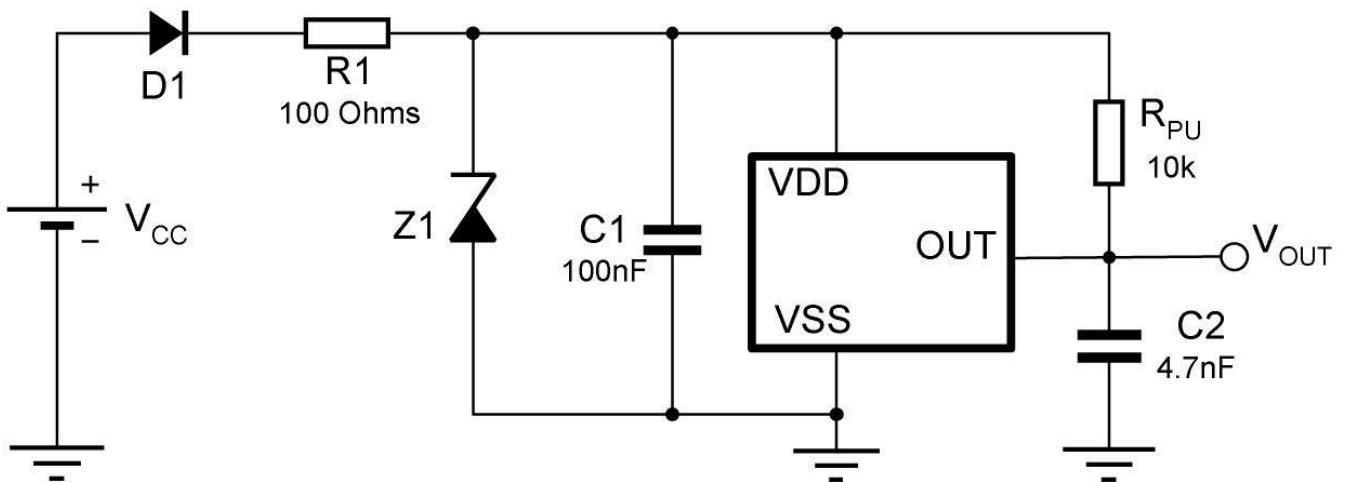
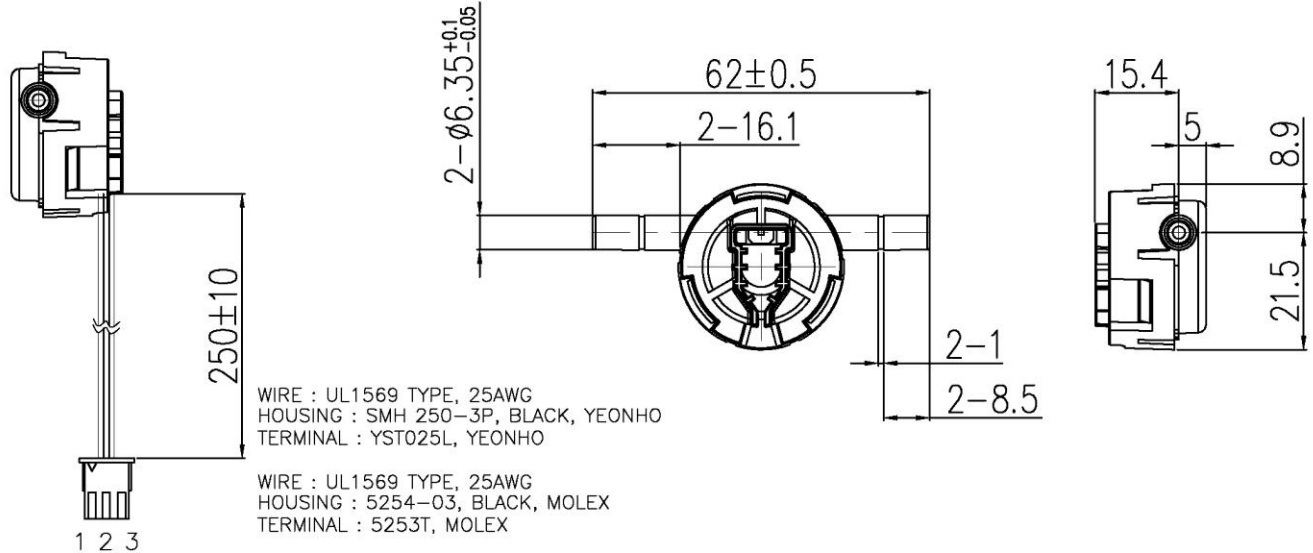


Fig 1. Direct water flow sensor

The specifications and dimensions can be changed without warning

DIMENSIONS



Pin NO.1 WIRE COLOR RED : VCC
 Pin NO.2 WIRE COLOR BLACK : GND
 Pin NO.3 WIRE COLOR WHITE : SIG

NOTE

- NOTE -
- Ensure there is no foreign substance.
 - Ensure that there is no fast-pulsatory movement of the media
 - Ensure that there are no reverse pressure surges
 - Ensure that there is no air in the system
 - Note the mounting position of the flowmeter
 - Min/max flow should be in the linear range of the selected flowmeter
 - Clean the system at appropriate intervals
 - Avoid electrical current peaks
 - Incorrect cabling of power supply +, signal and ground will destroy the flowmeter
 - Do not mechanically load electrical contacts
 - Avoid moisture on the electrical contacts
 - Avoid stray pick-up via the cable (Do not lay cables in parallel with high current loads)
 - Avoid strong magnetic materials.
 - Avoid operation by air-flow.
 - Avoid contacting chemical materials directly or indirectly.
 - Avoid operating for more than 10mins non-stop.
 - When using, use filtered water.
 - Avoid using at the condition of circumstance occuring condensation.