

# 3 Way Valve

(ATV 300-W5000)

## PRODUCT SPECIFICATION SHEET



### FEATURES

- This valve excel in closing of flow path
- This valve is superior to endurance than other valve.
- This valve has various structures.

### CONTENTS

Application .....	1
Features .....	1
Specifications .....	1~2
Dimensions .....	2

### APPLICATION

This valve is used in changing water way direction in Wall Hung Gas boiler.

According to direction, it can be a water heater or room heater..

This valve has application to gas boiler, etc.

### SPECIFICATIONS

Type	: Motorized Three Way (ON – OFF Valve)	
Installation	: Free	
Fluid	: Water	
Ambient temperature	: -10 ~ 60℃	
Permissible fluid temperature	: 0 ~ 90℃ (It shall not be frozen)	
Material	: Body	NY66(G/F 30%)
	: Ball	EPDM
	: O-ring	Silicone
	: Shaft	Brass
	: Switching contact	Ag-SnO2 (Optional : Au-plated)

## SPECIFICATIONS

Common use pressure		: 0.2 ~ 3 kgf/cm <sup>2</sup>
Electrical rating	Power supply	: 220 / 240 VAC, 50 /60 Hz
	Power consumption	: less than 2.5 / 3W
	Working time	: Hot water(open) + Room heating(Close)=5(sec), Hot water(Close) + Room heating(Open)=15(sec)
	Current	: less than 20mA
Withstand pressure		: When water pressure = 5,0 kgf/cm <sup>2</sup> is added for one minute, no external leakage shall be measured and it must be no damaged on the body.
Dielectric strength		: When AC1800V(50/60Hz) is added between the connector and body for one second, it shall be no unusual, detecting current is under 3mA.
Insulation resistance		: Between terminal and outer exposed metal parts shall be 100 MΩ ever by DC 500V mega
Weight		: 271g
Caution (Electrical contacts)		<p>: Set up CR electric circuit so as to absorb inrush circuit when designing circuit. Selected small load switch with gold-plated contact, this kind of switch was not easily affected by environment.</p> <p>The rating values listed in the documents refers to the value under standard testing condition (i.e.temperature 15 ~ 35℃, relative humidity 25 ~ 75%, air pressure 86 ~ 106kPa) if no other conditions specified. When testing with actual equipment, please confirm not only the loading condition but also the using environment should be the same as the actual using condition.</p> <p>When keep switches, please pack it in polyethylene bag to prevent silver plated terminal vulcanization and change color. Please do not store it in places where there is harmful gas, high temperature and high humidity. In some storage places, we suggest you to re-inspect it before use when it is out of factory over 3-6 months.</p>

Notice

In case of following circumstance, we recommend to discuss with us before using.

1. Vapours containing silicone can adversely affect the functioning of electrical contacts. In the case of low switching capacities such as 24V, less than 20mA, for example, we recommend using RC module or electronic switch (no-contact switch) in air containing silicone or oil.

In case of high humidity or aggressive gas components (H<sub>2</sub>S), we recommend using a pressure switch with gold contact. Closed-circuit current monitoring is recommended under difficult operating conditions.

## DIMENSIONS

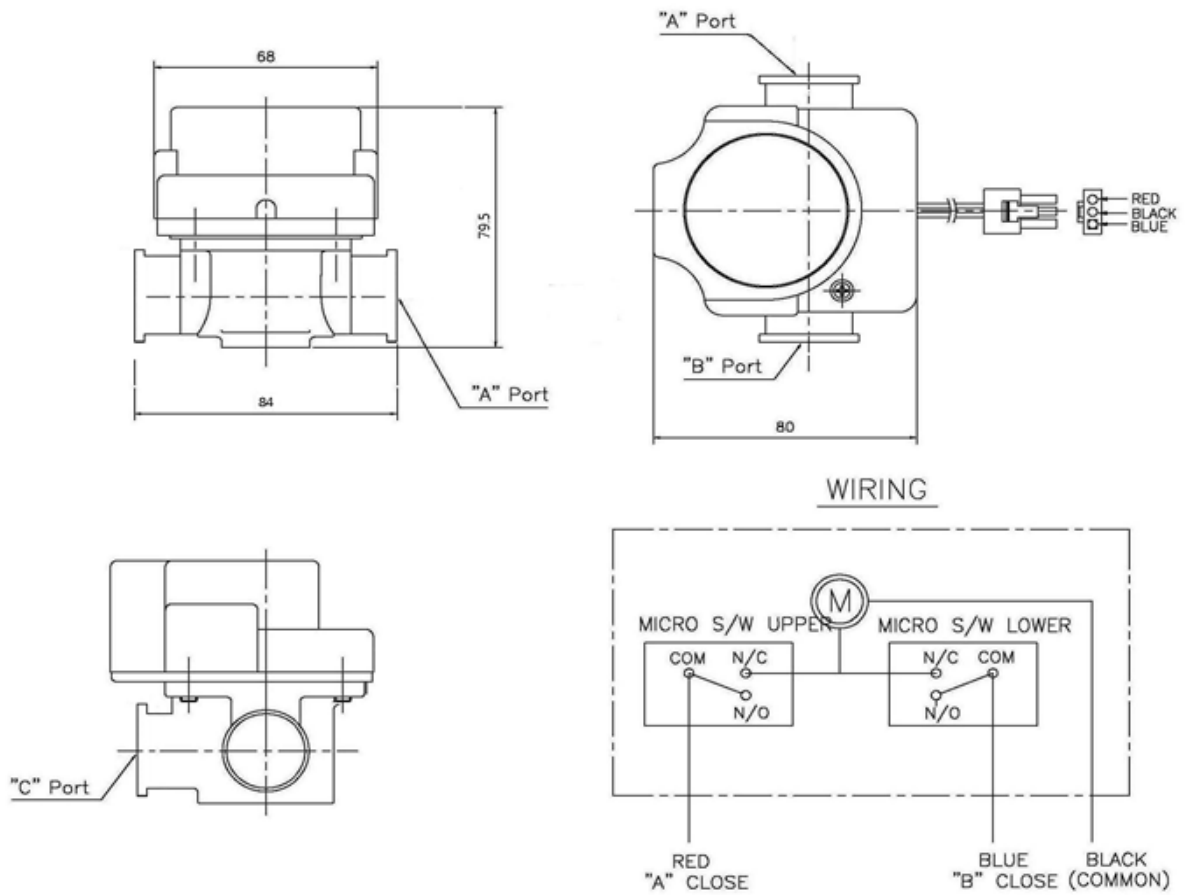


Fig 1. 3 Way valve

**The specifications and dimensions can be changed without warning.**