

3 Way Valve (ATV 300-KT)

PRODUCT SPECIFICATION SHEET



FEATURES

- This valve excel in closing of flow path
- This valve is superior to endurance than other valve.
- This valve has various structures.

CONTENTS

Application	1
Features	1
Specifications	1~2
Dimensions	2



APPLICATION

This valve is used in changing water way direction in Wall Hung Gas boiler.
According to direction, it can be a water heater or room heater..
This valve has application to gas boiler, etc.

SPECIFICATIONS

Type	: Motorized Three Way (ON - OFF Valve)	
Installation	: Free	
Fluid	: Water	
Ambient temperature	: -10 ~ 60°C	
Permissible fluid temperature	: 0 ~ 90°C (It shall not be frozen)	
Material	: Body	NY66(G/F 30%)
	: Ball	EPDM
	: O-ring	Silicone
	: Shaft	Brass

SPECIFICATIONS

Common use pressure		: 0.2 ~ 3 kgf/cm ²
Electrical rating	Power supply	: 220 / 240 VAC, 50 / 60 Hz
	Power consumption	: less than 2.5 / 3W
	Working time	: Hot water (open) + Room heating (Close)=10 (sec), Hot water (Close) + Room heating (Open)=10 (sec)
	Current	: less than 20mA
Withstand pressure		: When water pressure = 5,0 kgf/cm ² is added for one minute, no external leakage shall be measured and it must be no damaged on the body.
Dielectric strength		: When AC1800V (50/60Hz) is added between the connector and body for one second, it shall be no unusual, detecting current is under 3mA.
Insulation resistance		: Between terminal and outer exposed metal parts shall be 100 MΩ ever by DC 500V mega
Weight		: 203g

DIMENSIONS

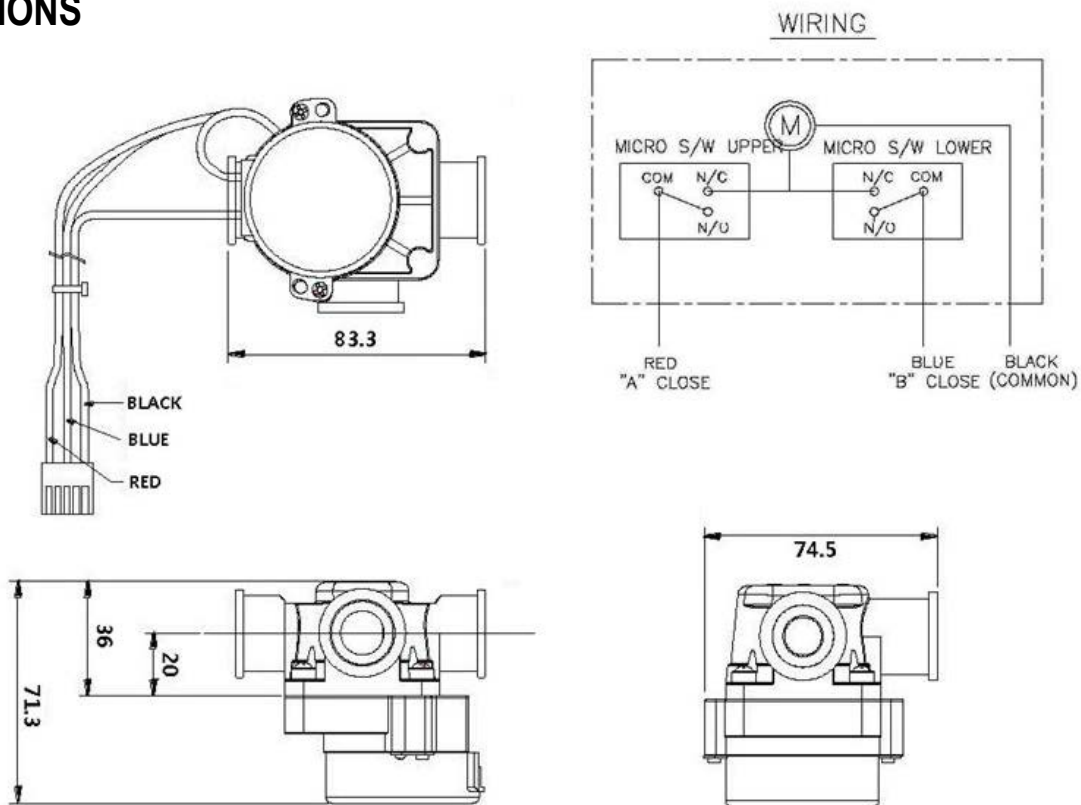


Fig 1. 3 Way valve

The specifications and dimensions can be changed without warning.