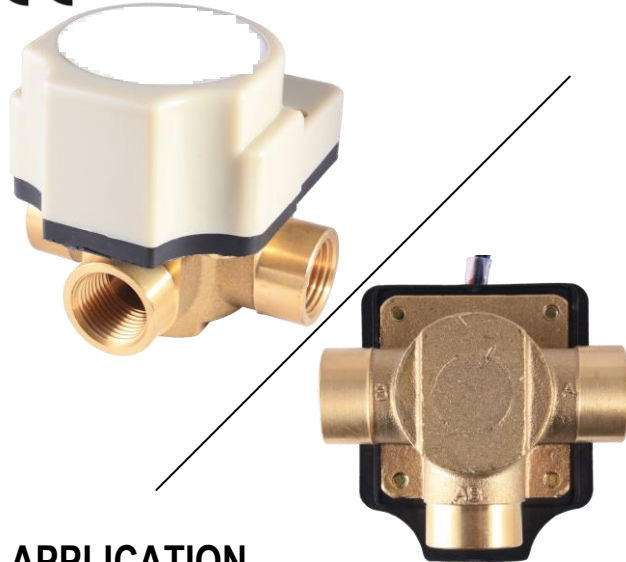


3 Way Valve

ATV 300-KD5 15A (Female)



FEATURES

- This valve excel in closing of flow path
- This valve is superior to endurance than other valve.
- This valve has various structures.

CONTENTS

| | |
|----------------------|-----|
| Application | 1 |
| Features | 1 |
| Specifications | 1~2 |
| Dimensions | 2 |

APPLICATION

This valve is used in changing water way direction in Wall Hung Gas boiler.

According to direction, it can be a water heater or room heater..

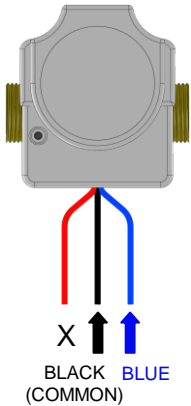
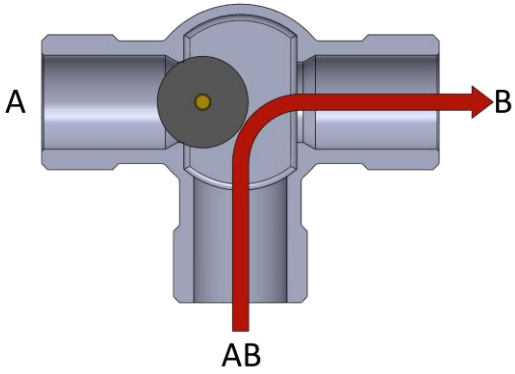
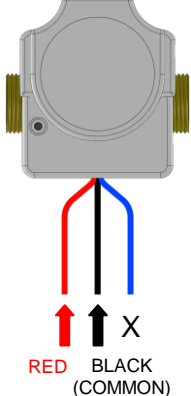
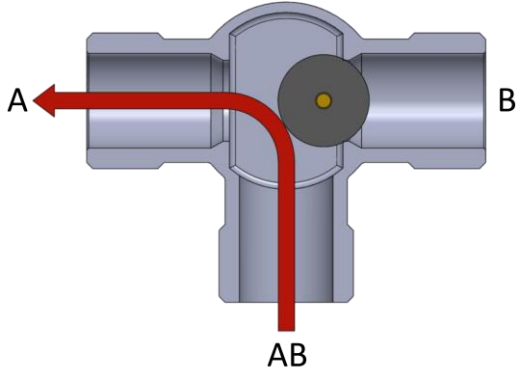
This valve has application to gas boiler, etc.

SPECIFICATIONS

| | | |
|-------------------------------|--------------------------------------|--------------------------------|
| Type | : Motorized Three Way ON – OFF Valve | |
| Installation | : Free | |
| Fluid | : Water | |
| Ambient temperature | : 0 ~ 60℃ | |
| Permissible fluid temperature | : 0 ~ 90℃ (It shall not be frozen) | |
| Material | : Body | Brass |
| | : Ball | EPDM |
| | : O-ring | Silicone |
| | : Shaft | Brass |
| | : Switching contact | Ag-SnO2 (Optional : Au-plated) |

SPECIFICATIONS

| | | |
|-----------------------|-------------------|---|
| Common use pressure | | : 0.2 ~ 3 kgf/cm ² |
| Electrical rating | : Power supply | : 220 / 240 VAC, 50 /60 Hz (or 24VAC, 110VAC) |
| | Power consumption | : less than 2.5 / 3W |
| | Working time | : 10sec |
| | Current | : less than 20mA |
| Withstand pressure | | : When water pressure = 5.0 kgf/cm ² is added for one minute, no external leakage shall be measured and it must be no damaged on the body. |
| Dielectric strength | | : When AC1800V(50/60Hz) is added between the connector and body for one second, it shall be no unusual, detecting current is under 3mA. |
| Insulation resistance | | : Between terminal and outer exposed metal parts shall be 100 MΩ ever by DC 500V meggar. |
| Connection | | : Female 15A |

| PORT (OPEN / CLOSE) | ELECTRIC SUPPLY | flow direction |
|------------------------|---|--|
| A : CLOSE B: OPEN |  |  |
| A : OPEN B : CLOSE |  |  |

Notice

Set up CR electric circuit so as to absorb inrush current when designing circuit.

Selected small load switch with gold-plated contact, this kind of switch was not easily affected by environment.

The rating values listed in the documents refers to the value under standard testing condition (i.e.temperature 15 ~ 35 °C , relative humidity 25 ~ 75%, air pressure 86 ~ 106kPa) if no other conditions specified. When testing with actual equipment, please confirm not only the loading condition but also the using environment should be the same as the actual using condition.

When keep switches, please pack it in polyethylene bag to prevent silver plated terminal vulcanization and change color.

Please do not store it in places where there is harmful gas, high temperature and high humidity. In some storage places, we suggest you to re-inspect it before use when it is out of factory over 3-6 months.

DIMENSIONS

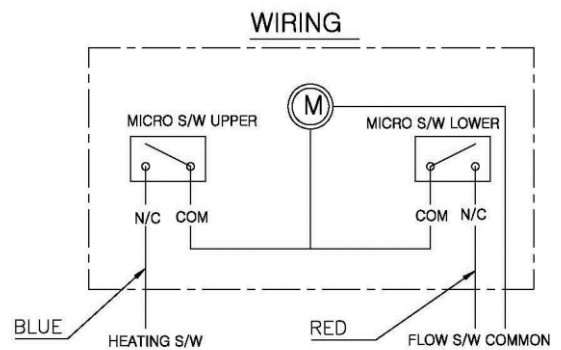
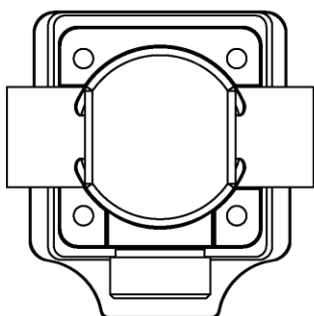
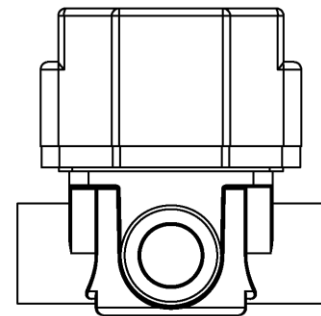
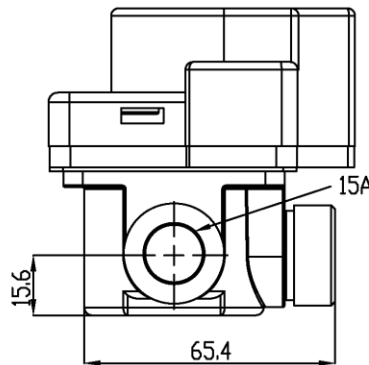
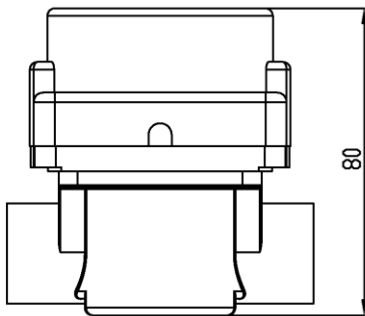
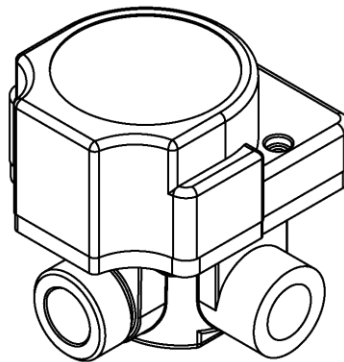
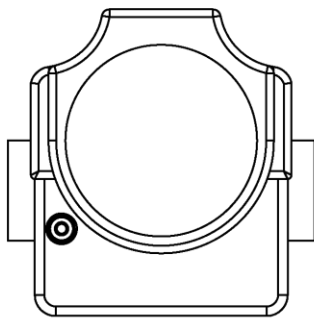


Fig 1. 3 Way valve

The specifications and dimensions can be changed without warning