

3 Way Valve for Renewable Energy Device

(ATV-300M-15A / 20A / 25A)

PRODUCT SPECIFICATION SHEET



ATV-300M-15A (Female)



ATV-300M-20A (male)



ATV-300M-25A (male)

FEATURES

- This valve excel in closing of flow path
- This valve is superior to endurance than other valve.
- This valve has various structures.
- This valve have a function to control by hand

CONTENTS

Application	1
Features	1
Specifications	1~2
Dimensions	2

APPLICATION

This valve is used open/shut of two way flow path.

This valve has application to Solar-heat system, Fuel cell system, etc.

SPECIFICATIONS

Type	: Motorized Three Way Valve	
Installation	: Vertical and Horizontal	
Fluid	: Water	
Ambient temperature	: 0 ~ 60℃	
Permissible fluid temperature	: 0 ~ 90℃ (It shall not be frozen)	
Material	: Body	Brass
	: Ball	EPDM
	: O-ring	Silicone
	: Shaft	Brass
	: Switching contact	Ag-SnO ₂ (Optional : Au-plated)

SPECIFICATIONS

Common use pressure		: 0.2 ~ 3 kgf/cm ²		
Electrical rating	: Power supply	: 220 / 240 VAC, 50 /60 Hz (24VAC depends on customer)		
	Power consumption	: less than 2.5 / 3W		
	Working time	: 10sec		
	Current	: less than 20mA		
Withstand pressure		: When water pressure = 5.0 kgf/cm ² is added for one minute, no external leakage shall be measured and it must be no damaged on the body.		
Dielectric strength		: When AC1800V(50/60Hz) is added between the connector and body for one second, it shall be no unusual, detecting current is under 3mA.		
Insulation resistance		: Between terminal and outer exposed metal parts shall be 100 MΩ ever by DC 500V meggar.		
Connection		: 15A (Female)	: 20A (male)	: 25A (male)
Weight		: 571g	: 609g	: 761g

- When you want to control this one by handle, please refer to additional paper into the box.

Notice

Set up CR electric circuit so as to absorb inrush circuit when designing circuit.

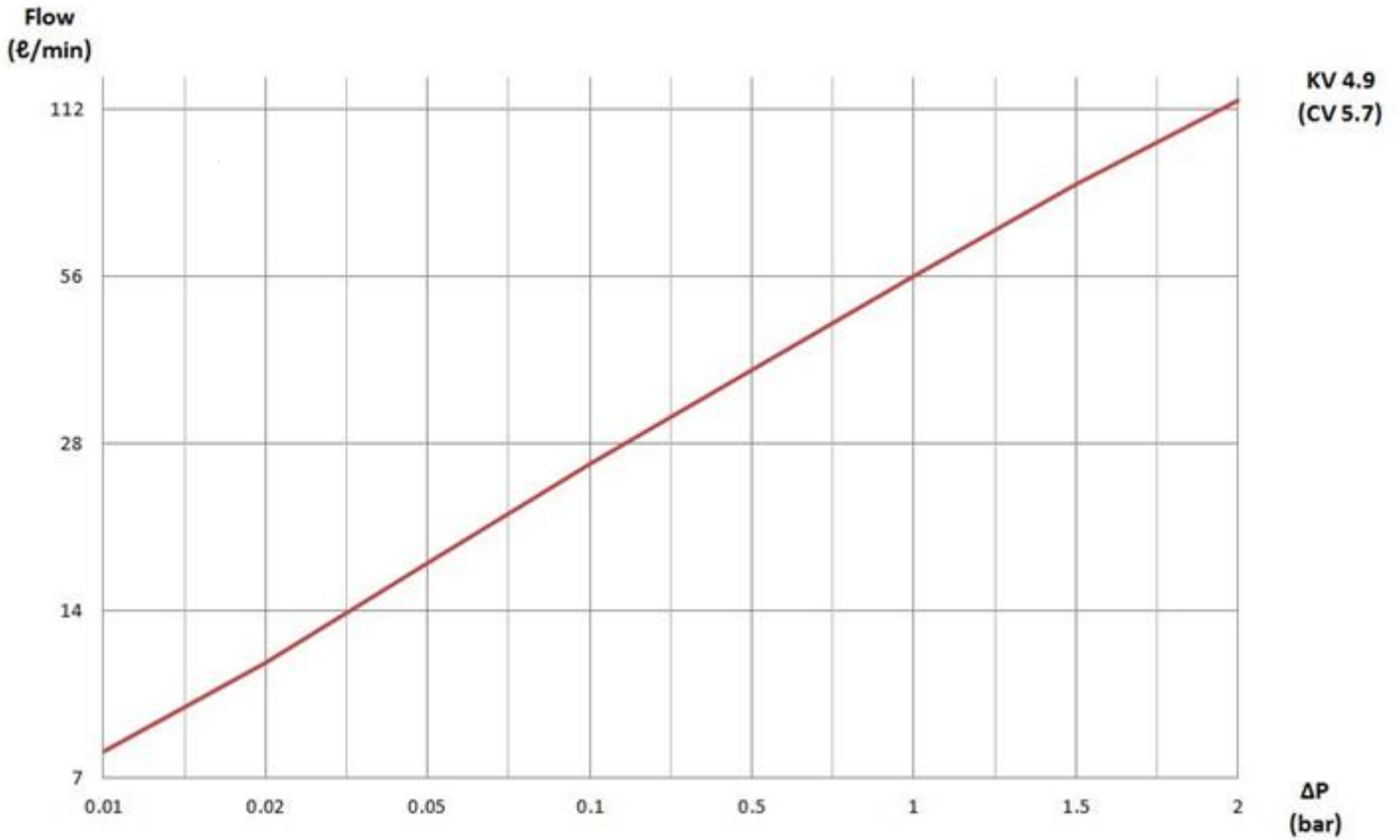
Selected small load switch with gold-plated contact, this kind of switch was not easily affected by environment.

The rating values listed in the documents refers to the value under standard testing condition (i.e.temperature 15 ~ 35℃, relative humidity 25 ~ 75%, air pressure 86 ~ 106kPa) if no other conditions specified. When testing with actual equipment, please confirm not only the loading condition but also the using environment should be the same as the actual using condition.

When keep switches, please pack it in polyethylene bag to prevent silver plated terminal vulcanization and change color.

Please do not store it in places where there is harmful gas, high temperature and high humidity. In some storage places, we suggest you to re-inspect it before use when it is out of factory over 3-6 months.

PRESSURE DROP GRAPH



DIMENSIONS

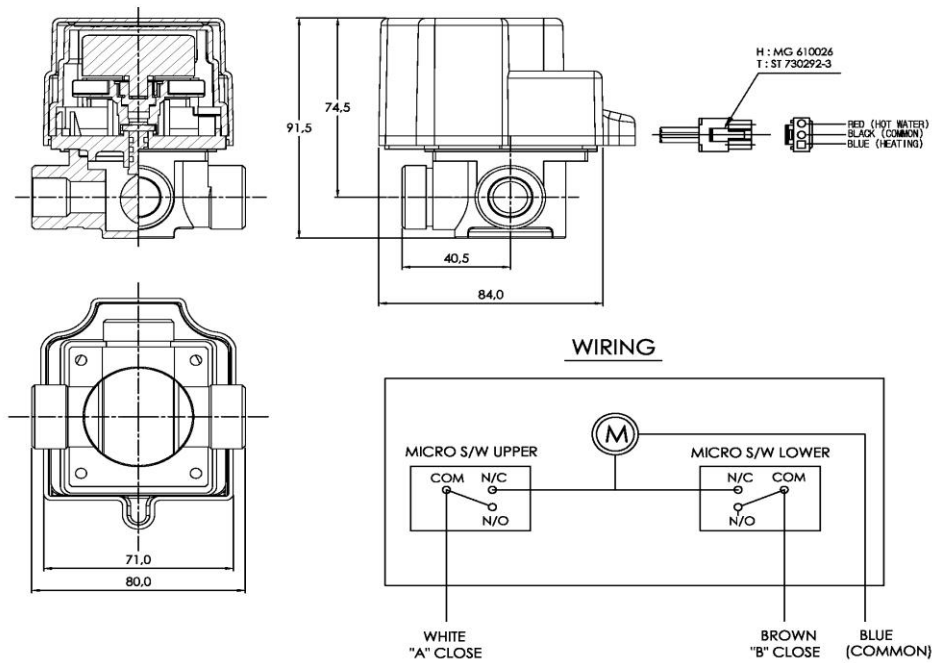


Fig 1. 3 Way valve

The specifications and dimensions can be changed without warning