

# Water Pressure Switch

(AWPS-PSCR)



(AWPS-PSCR)



(AWPS-PSCR B)  
<Option>

## FEATURES

- This switch operates by an only positive pressure
- This switch is operated by low pressure and a user is able to request necessary pressure point.
- It is usually possible to setup the switching point by the customer's request.

## CONTENTS

Application .....	1
Features .....	1
Specifications .....	1~2
Dimensions .....	2

## APPLICATION

This switch is used in water pressure-sensing of heating pipe in the wall hung gas boiler.

This switch has application to sensing of water pressure in heating apparatus.

## SPECIFICATIONS

Type	: Differential pressure type	
Installation	: Vertical and horizontal	
Permissible fluid	: Water	
Electrical ratings	: 16A, 250VAC	
Allowable fluid temperature	: 0 ~ 90℃ (It shall not be frozen)	
Allowable ambient temperature	: 0 ~ 60℃	
Material	: Body	NY (G/F 30%)
	Diaphragm	EPDM
	O-ring	-
	Spring	SUS304

**SPECIFICATIONS**

Model		0.2	0.6	1.0
Operating (ON / OFF)		0.25 bar	0.6 bar	1.0 bar
( $\Delta P$ )		: Less than 0.2 bar		
Withstand pressure		: 4.5 bar		
Contact resistance		: Initial, 150 m $\Omega$ .		
Insulation resistance		: 100 M $\Omega$ , Min. DC500V Megger		
Dielectric strength	Terminal – Terminal	: 800 VAC/1 min		
	Terminal – Earth	: 1500 VAC/1 min		
Mechanical life cycle		: 200,000 Cycle		
Electrical life cycle		: 100,000 Cycle		
Connection		: Standard : male PF1/4" (SWPS-PSCR B Female <Option> PF1/4")		
Electrical connection		: Male fast on 4.8X0.5mm		
Weight		: 29g		

**DIMENSIONS**

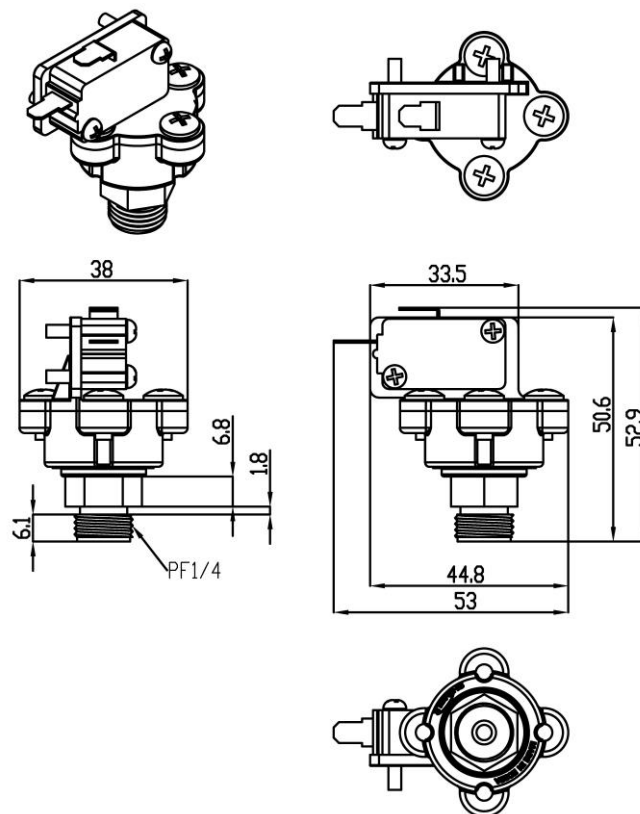


Fig 1. Water pressure switch (AWPS-PSCR)

**The specifications and dimensions can be changed without warning**

**WATER PRESSURE SWITCH**

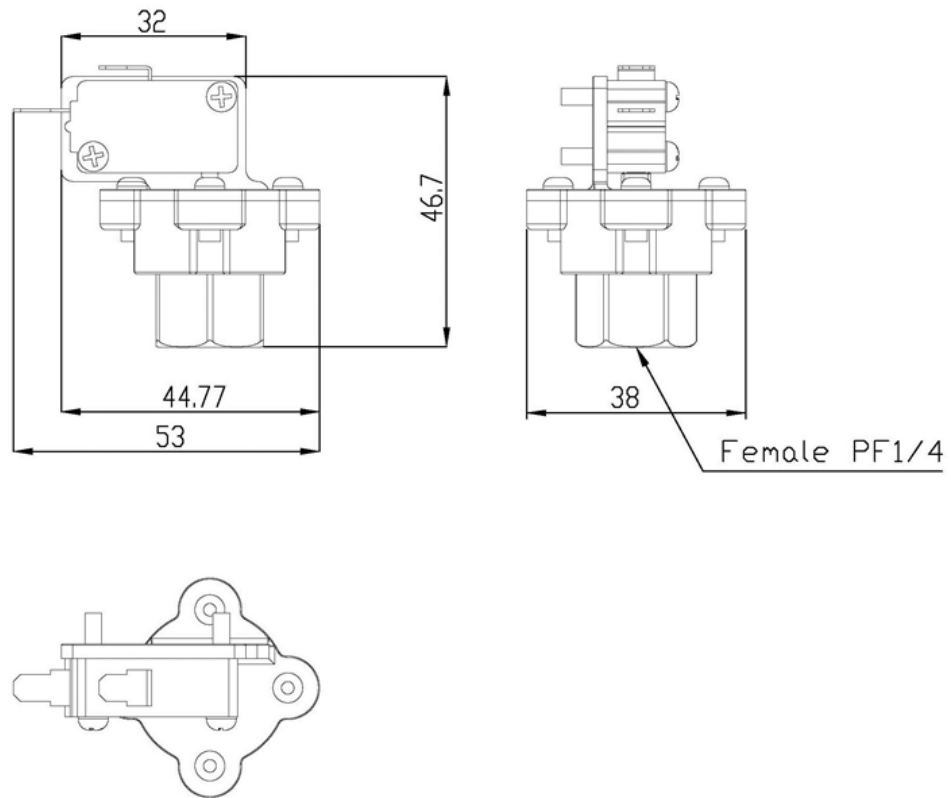


Fig 1. Water pressure switch (AWPS-PSCR B)  
<Option>

**The specifications and dimensions can be changed without warning**