

# Air Pressure Switch(Fix)

## (AAPS-72F)

### PRODUCT SPECIFICATION SHEET



## FEATURES

- This switch is operated by a positive pressure and negative pressure, a differential pressure.
- This switch is usually operated at the point of low pressure of 0 to 30 mmH<sub>2</sub>O and users are able to request necessary pressure point.
- This switch has a various condition of pressure setup.

## CONTENTS

Application .....	1
Features .....	1
Specifications .....	1~2
Dimensions .....	3

## APPLICATION

This switch is used in air pressure sensing.

This switch has application to sensing of exhaust gas in oil, wall hung gas boiler and fan heater.

## SPECIFICATIONS

Type	: Differential pressure type	
Installation	: Vertical or Horizontal (Standard : Vertical)	
Control fluid	: Air	
Electrical ratings	: 5A – 250VAC (Resistive lode)	
Allowable temperature	: -20 ~ 60°C	
Pressure range for set-up Point(ON)	: 4 ~ 30 mmH <sub>2</sub> O	
Material	: Body	PC (G/F 30%)
	: Diaphragm	Silicone
	: Bellows	Silicone
	: Spring	SUS304

## SPECIFICATIONS

Allowable pressure	: 5,000 mmH <sub>2</sub> O	
Difference ON and OFF point (ΔP)	: ≤ 3.0 mmH <sub>2</sub> O	
Leak tightness	: 120 cm <sup>3</sup> /h (Pressure condition 100mmH <sub>2</sub> O)	
Switching tolerance	: ± 1.0 mmH <sub>2</sub> O (It can be changed by customer)	
Shock	: 5G	
Constant resistance	: Initial, 150 mΩ.	
Insulation resistance	: 100 MΩ, Min. DC500V Megger	
Dielectric strength	Terminal – Terminal	: 800 VAC/1 min
	Terminal – Earth	: 1500 VAC/1 min
Mechanical life cycle	: 200,000 Cycle	
Electrical life cycle	: 100,000 Cycle	
Humidity	: RH 0 ~ 80%	
Air connection	: Silicone Φ4 XΦ7, Φ5XΦ8	
Installation screw	: M4	
Electrical connection	: Male fast on 6.3X0.8mm	
Weight	: 84.3g	

**Notice**

In case of following circumstance, we recommend to discuss with us before using.

1. Only use silicone tube which have been sufficiently cured.
2. Vapours containing silicone can adversely affect the functioning of electrical contacts. In the case of low switching capacities such as 24V, less than 20mA, for example, we recommend using RC module or electronic switch(no-contact switch) in air containing silicone or oil.

In case of high humidity or aggressive gas components (H<sub>2</sub>S), we recommend using a pressure switch with gold contact.

Closed-circuit current monitoring is recommended under difficult operating conditions.

# DIMENSIONS

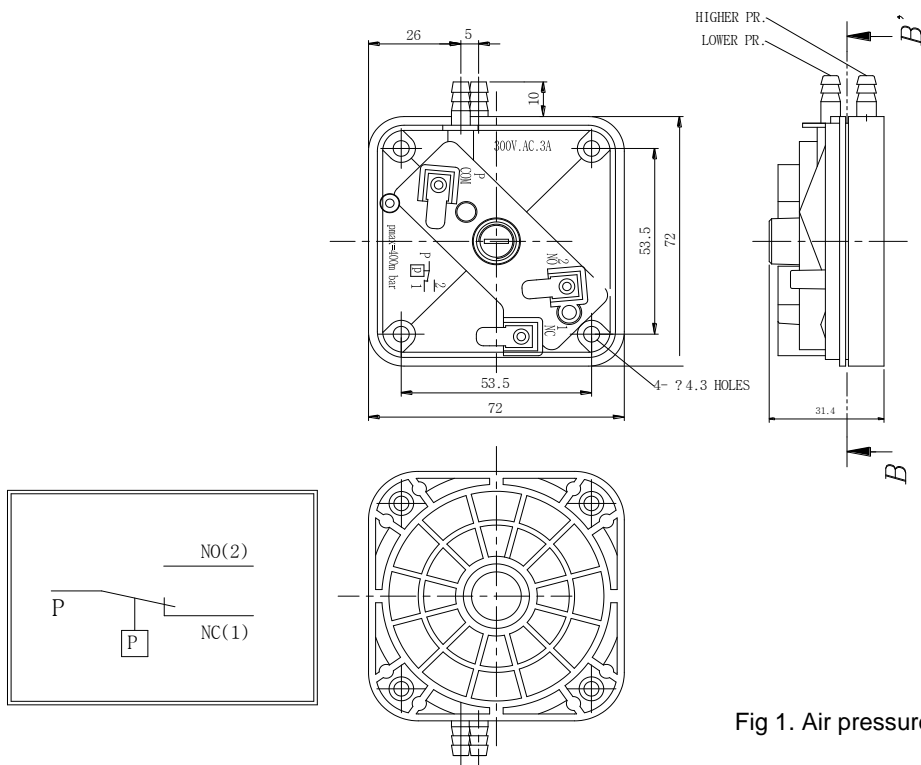


Fig 1. Air pressure switch(F)

**The specifications and dimensions can be changed without warning**