

# Pressure Switch

(AWPS-N)



## FEATURES

- This switch operates by an only positive pressure
- This switch is operated by low pressure and a user is able to request necessary pressure point.
- It is usually possible to setup the switching point by the customer's request.

## CONTENTS

Application .....	1
Features .....	1
Specifications .....	1~2
Dimensions .....	3

## APPLICATION

This switch is used in water pressure-sensing of heating pipe in the wall hung gas boiler.

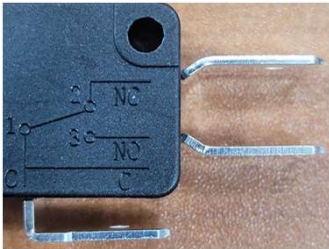
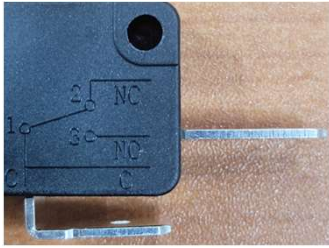
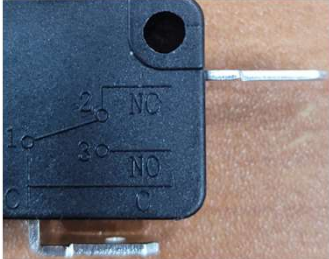
This switch has application to sensing of water pressure in heating apparatus.

## SPECIFICATIONS

Type	: Pressure type	
Installation	: Vertical and horizontal	
Permissible fluid	: Air, Water	
Electrical ratings	: 10A, 250VAC	
Allowable fluid temperature	: 0 ~ 80°C (It shall not be frozen)	
Allowable ambient temperature	: 0 ~ 60°C	
Material	Body	PA66 (G/F 30%)
	Diaphragm	EPDM
	O-ring	S-11.2
	Spring	SUS304

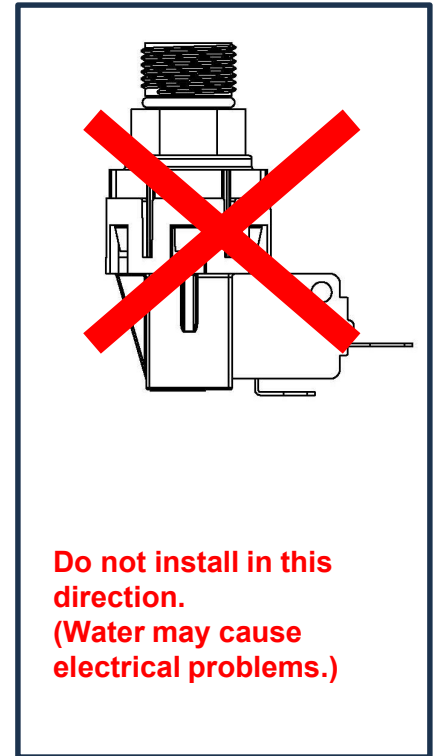
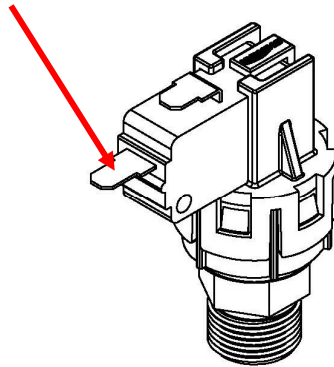
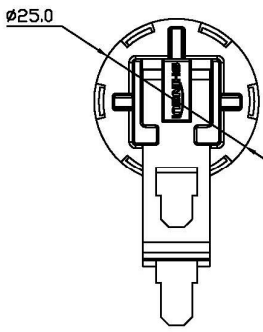
# SPECIFICATIONS

Model		0.2	0.3	0.6	1.0
Operating point(bar)		0.25 bar	0.35 bar	0.6 bar	1.0 bar
(ΔP)	: Less than 0.2 bar				
Withstand pressure	: 4.5 bar				
Contact resistance	: ≤150mΩ (initial value)				
Insulation resistance	: ≥100MΩ (500VDC, 1min)				
Dielectric strength	Terminal – Terminal	: 800 VAC / 1 min			
	Terminal – Earth	: 1500 VAC / 1 min			
Mechanical life cycle	: 100,000 Cycle				
Electrical life cycle	: 100,000 Cycle (On 10 seconds, Off 10 seconds)				
Connection	: Standard : PF1/4" male				
Electrical connection	: Male fast on 4.8X0.8mm or 6.3X0.8mm				
Weight	: 19.5g				

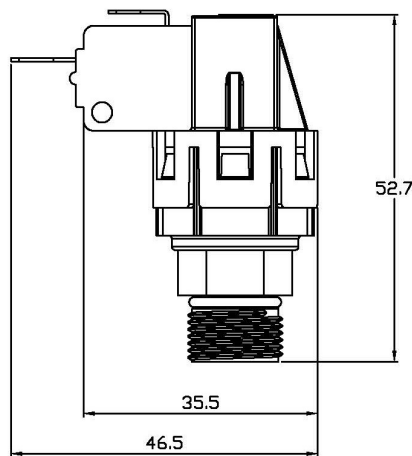
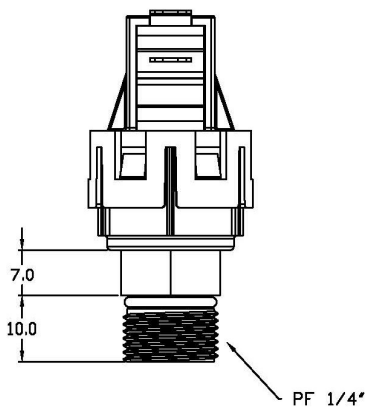
Micro switch circuit		SPDT
		SPST NO
		SPST NC

# DIMENSIONS

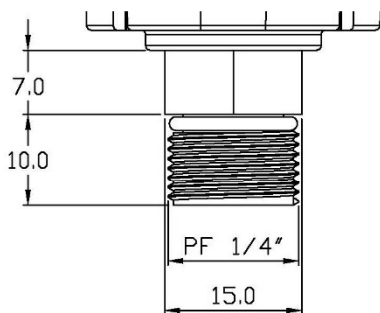
Electrical connection :  
Male fast on 4.8X0.8mm or 6.3X0.8mm



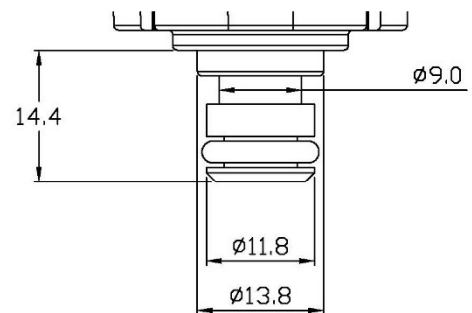
**Do not install in this direction.  
(Water may cause electrical problems.)**



## • PF 1/4" male



## • Fast connection(Clip)



- The specifications and dimensions can be changed without warning.
- Warranty 1 year.