

Water Flow Sensor

(AWF –B15)

PRODUCT SPECIFICATION SHEET



FEATURES

- This sensor has excellent character in low pressure.
- The out put pulse frequency has linear character in flux change.
- This sensor has a half-permanent life by high sensitivity semiconductor sensor.

CONTENTS

Application	1
Features	1
Specifications	1~2
Dimensions	2

APPLICATION

This sensor is used in water flow sensing.

This sensor has application to gas boiler and instantaneous warm-water appliance, and water filtering appliance.

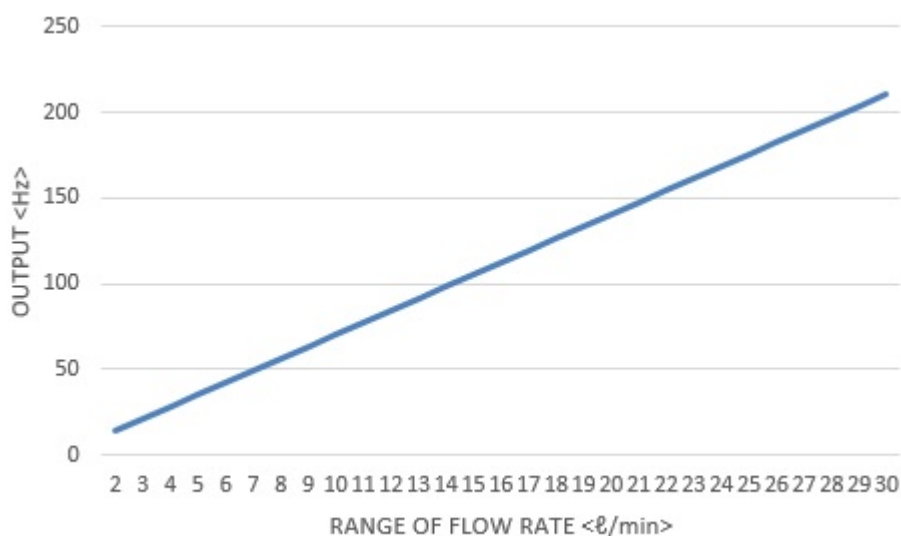
SPECIFICATIONS

Type	: Turbine with Hall sensor	
Installation	: Vertical / Horizontal	
Working pressure	: 10 kgf / cm ²	
Permissible fluid temperature	: 0 ~ 60℃ (It shall not be frozen)	
Material	: Body	Brass
	: Rotor	POM
	: Magnet	Ba – Ferrite
	: Stop ring	SUS304

SPECIFICATIONS

Efficiency	Fluid	: Water		
	Measuring range	: 2.0 ~ 30 ℓ / min		
Flow rate – pulse Formula $F(\text{Hz})=7Q(\ell/\text{min})$		Flow rate Q (ℓ /min)	Pulse signal (Hz)	
		2	14	Accuracy F.S ± 5%
		5	35	
		10	70	
		20	140	
		30	210	
Withstand pressure		: 17.5 kgf/cm ² (1 min)		
Supply voltage		: DC 2.7V ~ 24V (MAX 4.5mA)		
Duty cycle		: 30 ~ 70%		
Insulation resistance		: Not less than 100 MΩ (Between the connector and body)		
Dielectric strength		: When AC 600V(50/60 Hz) is added between the connector and body, detecting current is under 3 mA.		
Pipe Connection		: PF 1/2"(15A) or PF 3/4"(20A)		
Weight		SWF-B15 : 216g SWF-B20 : 234g		

GRAPH



DIMENSIONS

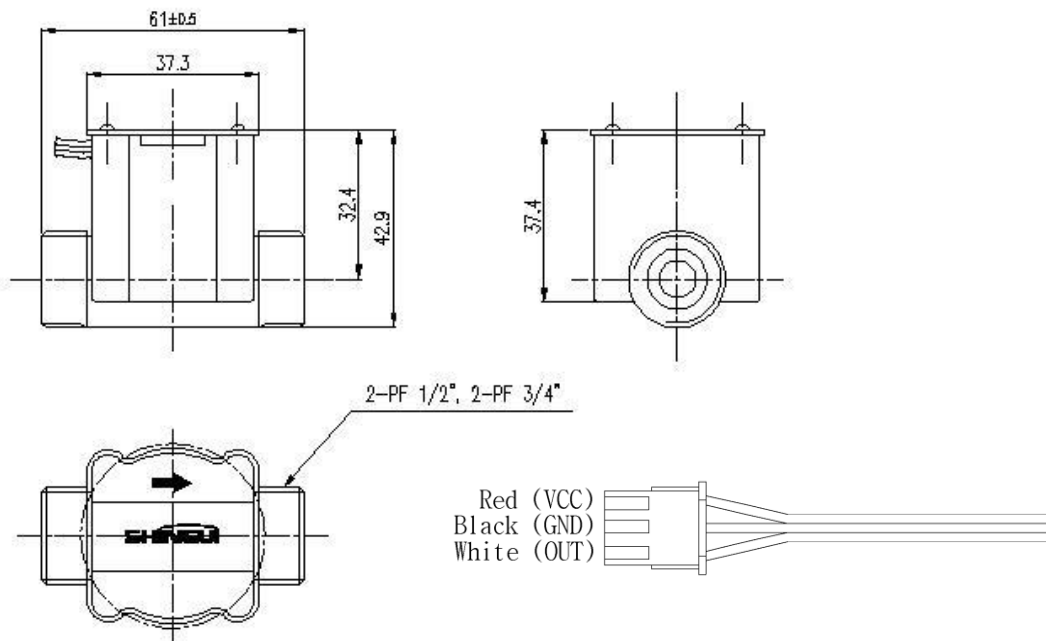
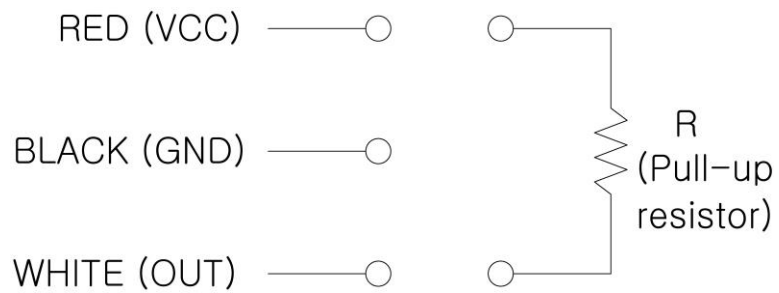


Fig 1. Water flow sensor



The specifications and dimensions can be changed without warning