

# Water Flow Sensor

(AWF - 15A)

## PRODUCT SPECIFICATION SHEET



### FEATURES

- This sensor has excellent character in low pressure.
- The out pulse frequency has linear character in flux change.
- This sensor has a half-permanent life by high sensitivity semiconductor sensor.

### CONTENTS

Application .....	1
Features .....	1
Specifications .....	1~2
Dimensions .....	2

### APPLICATION

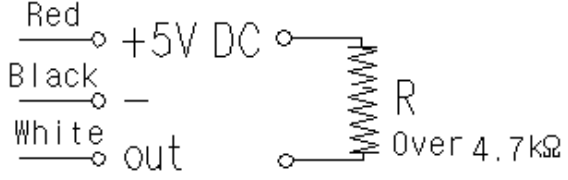
This sensor is used in water flow sensing.

This sensor has application to gas boiler and instantaneous warm-water appliance, and water filtering appliance.

### SPECIFICATIONS

Type	: Hall sensor	
Installation	: Vertical / horizontal	
Working pressure (Max)	: 10.0 kgf/cm <sup>2</sup>	
Permissible pressure (Max)	: 17.5 kgf/cm <sup>2</sup>	
Material	: Body	NY66(G/F 30%)
	: Rotor	POM
	: Magnet	Ba – Ferrite
	: Stop ring	SUS304

## SPECIFICATIONS

Efficiency	Fluid	: Water	
	Measuring range	: 2.0 ~ 24 ℓ / min	
Flow rate - pulse  	Flow rate Q ( ℓ / min)	Pulse signal (Hz)	
	2.0	14.0 ± 10%	
	6.0	42.0 ± 8%	
	12.0	84.0 ± 8%	
	24.0	168.0 ± 8%	
Permissible fluid temperature	: 0 ~ 60 °C (It shall not be frozen)		
Electrical rating	: DC 2.7V ~ 24V, MAX 4.5mA		
Duty cycle	: 30 ~ 70%		
Insulation resistance	: Not less than 100 MΩ (Between the connector and body)		
Dielectric strength	: When AC 600V(50/60 Hz) is added between the connector and body, detecting current is under 3 mA.		
Pipe Connection	: PF 1/2" (15A) or PF 3/4" (20A)		

## DIMENSIONS

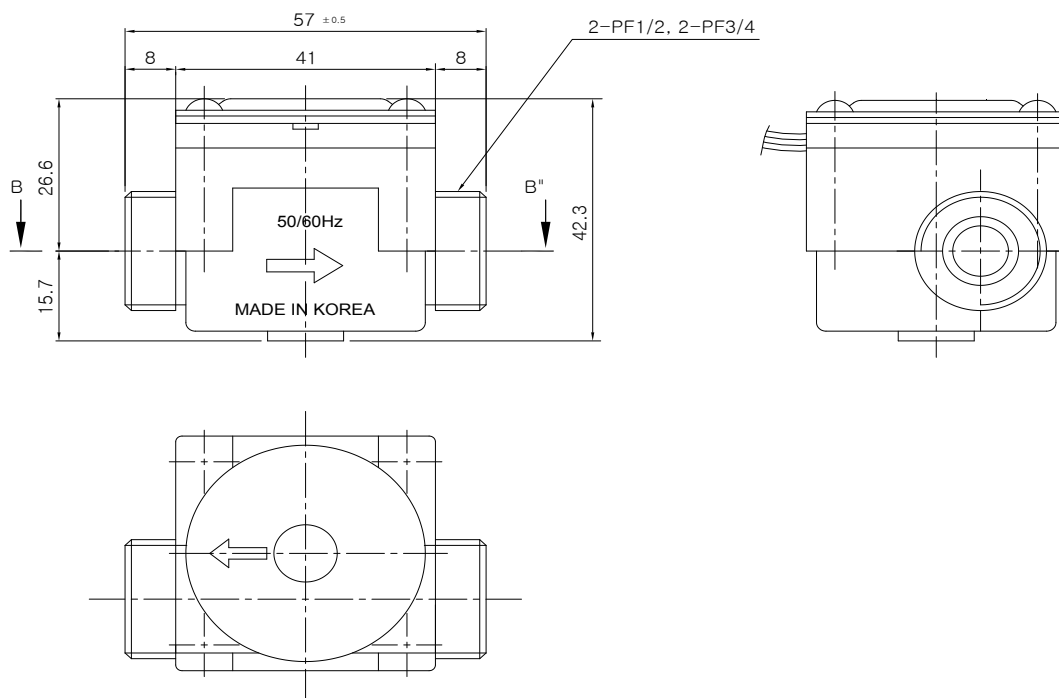


Fig 1. Water flow sensor

The specifications and dimensions can be changed without warning