

P-53V

Air Control Applications A/C system control Sensor

- -1 to 0...50bar
- Dry/Wet media
- Superior Long term Stability
- Temperature Compensated
- output 0.5~4.5VDC
- Excellent Repeatability & Hysteresis
- EMI/RFI Protection

P-53 series Long term minimization of these errors is maintained after millions of full scale overpressure cycles, making electronic set point virtually drift-free. Use of semiconductor materials in the sensing element and its mounting provides excellent resistance to most liquids and chemicals. Ruggedness and reliability are also enhanced by a stainless steel housing to resist corrosion pressure sealing for media compatibility is provided by selection of welding Sealing type. metal sensing element contains and integral, reliable, solid state, custom hybrid circuit signal conditioner. This circuit is digital interface can be used for a simple PC-controlled calibration procedure, in order to program a set of calibration coefficients into an on-chip EEPROM and without the cost overhead associated with trimming by external devices or a laser.



P-53V

TYPICAL APPLICATIONS

- ✓ Automobiles
- ✓ System air conditioners
- ✓ Industrial refrigerators
- ✓ Air compressors

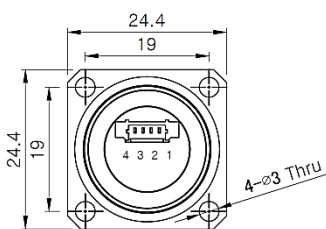
Physical Data [Custom Ranges and Compound Ranges Available]

Gauge Pressure	Unit	Over Pressure	Burst
◆ 1, 2, 4, 6, 10	bar	◆ 3 x F.S.	◆ 5 x F.S.
◆ 15, 20, 35, 50	bar	◆ 2 x F.S.	◆ 3 x F.S.

General SPEC

Characteristic	P-53V
Pressure Range	-1 to 0...50bar
Power Supply	3VDC or 5VDC or 12VDC
Output	0.5~4.5VDC or One-way communication
Operating Temp. Range	-40 to 135°C
Compensated Temp. Range	-30 to 125 °C
Accuracy	±1.0%F.S(Option ±0.5%F.S)
Non-linearity	±0.2%
Hysteresis and repeatability	±0.03% typical
Body Material	BRASS

Dimensions (mm)



PIN No.	Description
1	VDD
2	OUT
3	GND
4	NC

