

P-200

Pressure Transducer MINI-DIN 43650 C type

- Provides a high level output
- Superior Long term Stability
- Temperature Compensated
- Linear Amplified Output
- Excellent Repeatability & Hysteresis
- EMI/RFI Protection

P-200series are Long term minimization of these errors is maintained after millions of full scale overpressure cycles, making electronic set point virtually drift-free. Use the sensing element or oil type strain gage elements glass bonded to stainless steel diaphragm and its mounting provides excellent resistance to most liquids and chemicals. Ruggedness and reliability are also enhanced by a stainless steel housing to resist corrosion pressure sealing for media compatibility is provided by selection of Non-welding Sealing type. metal sensing element contains and integral, reliable, solid state, custom ASIC. This circuit is digital interface can be used for a simple PC-controlled calibration procedure, in order to program a set of calibration coefficients into an on-chip EEPROM and without the cost overhead.



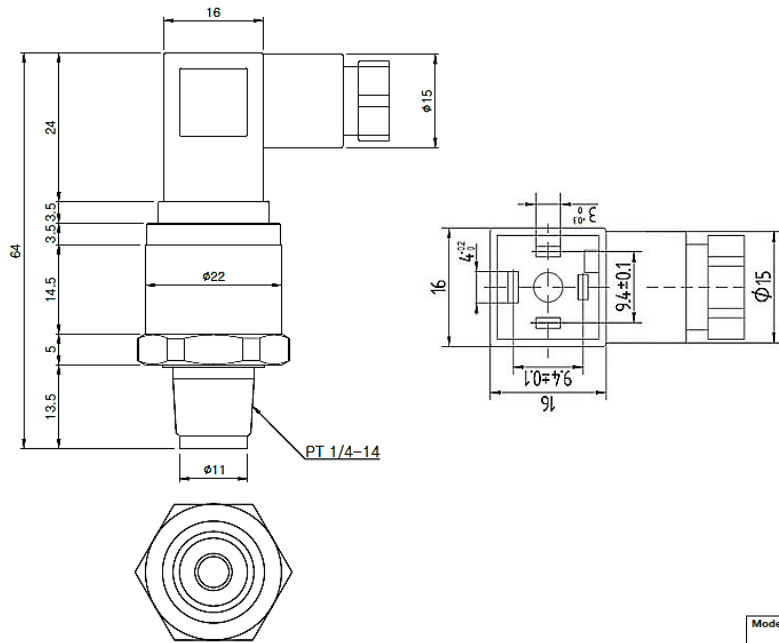
P-200A/P-200V/P-200HV

TYPICAL APPLICATIONS

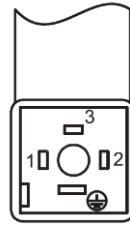
- ✓ Process control
- ✓ Pneumatic and hydraulic controls
- ✓ Pump and compressors
- ✓ Agricultural technology
- ✓ Environmental control systems

General SPEC			
Characteristic	P-200(A)	P-200(V)	P-200(HV)
Output	4~20mA	0.5~4.5VDC / 1~5VDC	0~10VDC
Power Supply	8~32VDC	5VDC / 12~32VDC	
Electric connection	MINI-DIN 43650 C type		
Pressure Range	0 to 50 [bar] ※Option range		
Operating Temp. Range	-40 to 125°C		
Compensated Temp. Range	-20 to 80°C		
Accuracy	≤ ±0.5%F.S [Typical/25°C]		
Total Error band	±1.5 %F.S [Typical] / ±2.0 %F.S [MAX]		
Hysteresis and repeatability	±0.1 %F.S [Typical] / ±0.15%F.S [MAX]		
Process connection	G1/4" , R1/4" and Option.		
Wetted Port material	STS630		
Body material	STS316 / STS303		
Electric connection material	PA66 + GF30 gold plated Pin		
Enclosure	IP67		
Over Pressure / Burst Pressure	2 x F.S. / 10 x F.S.		
Response time 10~90%	≤2ms		
Withstand voltage	500V AC (1minutes between case and all terminals tied)		
Insulation resistance	Greater than 100MΩ (20V DC between case and all terminals tied)		
Mechanical life cycle	1,000,000/cycle		
Circuit protection	Reverse polarity protected. (Power supply +/-)		
Shock proof	1000m/s ² (6ms or less, X, Y, Z 3times for each at constant temp.)		
Vibration proof	200m/s ² (10~2000Hz, X:4h, Y:2h, Z:2h at constant temp.)		

Dimensions (mm)



REV.	DATE	DESCRIPTION	CHKD
△			



MINI-DIN 43650 type
Description

No.	P-200(A)	P-200(V) P-200(HV)
1	IP+	VDC
2	IP-	GND
3	NONE	OUT
PE		

Model Name	P-200A/P-200V,P-200HV	Scale	2 : 1	Unit	mm
Part Name		Size	A3(297×420)	DWG Rev.	Rev. 1.0
DWG No.	--			Sheet	1 / 1
				Approved	
				Checked	
				Designed	

How to order

	P	-	200			
1) Output signal						
4~20mA	-----	A				
1~5V	-----	V1				
0.5~4.5V (ratiometric)	-----	V2				
0~10V	-----	HV				
2) Supply Voltage						
5 VDC	-----	-----	P0			
8~32 VDC	-----	-----	P1			
12~32 VDC	-----	-----	P2			
Other on request	-----	-----	Z			
3) Pressure range						
0 to 50 bar	-----	-----	-----	50		
Other on request	-----	-----	-----	Z		
4) Process connection						
G1/4" (PF1/4")	-----	-----	-----	-----	G4	
R1/4" (PT1/4")	-----	-----	-----	-----	R4	